

ISUZU

ELF



SAFETY PLUS

SRS
AIRBAG

ASR
ANTI-SLIP REGULATOR

ABS
ANTI-LOCK BRAKING SYSTEM

EBD
ELECTRONIC BRAKE FORCE DISTRIBUTION

4X2 RIGID

GVW 7,500kg

GVW 8,500kg

**NPR
PRO**

**NPR
150**

**NQR
PRO**



SPECIFICATIONS

| | | NPR PRO | | NPR150 | | NQR PRO | |
|-------------------------------------|-----------------|---|----------|------------------------|----------|----------|----------|
| MODEL CODE | | NPR81UHL | NPR81UKH | NPR75UHL | NPR75UKH | NQR75UKN | NQR75ULN |
| Drive System | | 4 x 2 | | | | | |
| ENGINE | | 4HL1-TC | | | | | |
| Model | | 4HL1-TC | | 4HK1-TC | | | |
| Type | | 4-Cylinder In-line, 4-Cycle, Water-Cooled OHC, Turbo with Intercooler | | | | | |
| Displacement | cc | 4,778 | | 5,193 | | | |
| Maximum Output (Gross) | kW (PS) @ rpm | 99.3 (135)@2,600 | | 110 (150) @ 2,600 | | | |
| Maximum Torque | Nm (kgfm) @ rpm | 372 (38)@1,600 | | 404 (41) @ 1,600-2,600 | | | |
| Emission Level | | Euro 2 | | | | | |
| Fuel System | | Common Rail Direct Injection | | | | | |
| TRANSMISSION | | MYY-6S / 6-Speed Manual | | | | | |
| Model / No. of Speed | | MYY-6S / 6-Speed Manual | | | | | |
| Gear Ratio | | 1st | 5.979 | 2nd | 3.434 | 3rd | 1.862 |
| | | 4th | 1.297 | 5th | 1.000 | 6th | 0.759 |
| | | Reverse | 5.701 | Final | 5.125 | | 4.556 |
| | | | 5.125 | | 4.556 | | 5.125 |
| WEIGHT & CAPACITIES | | | | | | | |
| Gross Vehicle Weight | kg | 7,500 | | 8,500 | | | |
| Curb Weight | kg | 2,415 | 2,545 | 2,455 | 2,490 | 2,705 | 2,790 |
| Front | kg | 1,665 | 1,690 | 1,610 | 1,630 | 1,710 | 1,785 |
| Rear | kg | 750 | 855 | 845 | 860 | 995 | 1,005 |
| Fuel Tank Capacity | l | 100 | | | | | |
| AXLE | | | | | | | |
| Front | Type | Reverse Elliot, I-Beam | | | | | |
| Front Axle Capacity (Design) | kg | 3,100 | | 3,300 | | | |
| Rear | Type | Banjo, Full Floating | | | | | |
| Rear Axle Capacity (Design) | kg | 6,600 | | | | | |
| SUSPENSION SYSTEM | | | | | | | |
| Suspension | Front | Semi Elliptical Alloy Steel Leaf Spring | | | | | |
| | Rear | with Double Acting Telescopic Shock Absorber | | | | | |
| TYRES & WHEELS | | | | | | | |
| Tyres | | 215 / 75R17.5 | | | | | |
| Wheels | | 17.5 x 6.00-127 | | | | | |
| BRAKES | | | | | | | |
| Service | Type | Hydraulic system with auto adjusting front and rear drum brakes | | | | | |
| Parking Brake Type | | Dual circuit, vacuum assistance and Anti-Lock Brake System (ABS) with Electronic Brake force Distribution (EBD) | | | | | |
| Auxiliary | | Transmission Mounted, Mechanical Operated Internal Expanding Exhaust Brake | | | | | |
| STEERING | | | | | | | |
| Steering System | | Power Assist, Recirculating Ball Type | | | | | |
| Min. Turning Radius | m | 6.3 | 7.1 | 6.3 | 7.1 | 7.8 | |
| ELECTRICAL | | | | | | | |
| Battery | | 12V x 2 | | | | | |
| Alternator | | 24V-80A | | 24V-90A | | | |
| OTHER SAFETY | | | | | | | |
| Supplemental Restraint System (SRS) | | Equipped with Pre-tensioner Seatbelt | | | | | |
| Anti-Slip Regulator (ASR) | | Equipped with on/off function | | | | | |
| DIMENSION | | | | | | | |
| Overall Length | mm | 5,985 | 6,635 | 5,985 | 6,635 | 7,355 | |
| Overall Width | mm | 2,125 | | | | | |
| Overall Height | mm | 2,270 | | 2,275 | | | |
| Wheelbase | mm | 3,365 | 3,815 | 3,365 | 3,815 | 4,175 | |
| Front Overhang | mm | 1,110 | | | | | |
| Rear Overhang | mm | 1,510 | 1,710 | 1,510 | 1,710 | 2,070 | |
| Front Tread | mm | 1,680 | | | | | |
| Rear Tread | mm | 1,650 | | | | | |
| Cab to Axle Center | mm | 2,795 | 3,242 | 2,792 | 3,242 | 3,602 | |

ISUZU

ISUZU MALAYSIA SDN BHD 200401026438 (664946-H)

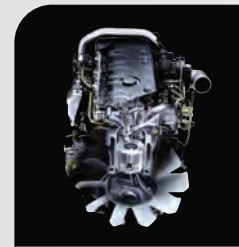
501D, LEVEL 5, TOWER D, UPTOWN 5, NO.5, JALAN SS21/39,
DAMANSARA UPTOWN, 47400 PETALING JAYA, SELANGOR DARUL EHSAN.
GENERAL LINE: 03-7723 9777 FAX: 03-7723 9779
HOTLINE: 1-300-88-1133 www.isuzu.net.my

 IsuzuTrucksMalaysia

ISUZU SERVICE CENTRE SDN BHD 2016010334731 (1205672-X)

LOT 730, JALAN SG. RASA, SECTION 17,
40000 SHAH ALAM, SELANGOR DARUL EHSAN.
PHONE: 03-5513 0518
FAX: 03-5512 7550

TESTED AND PROVEN POWERTRAIN

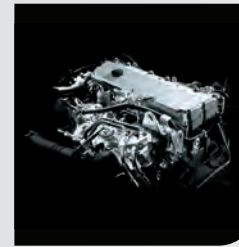
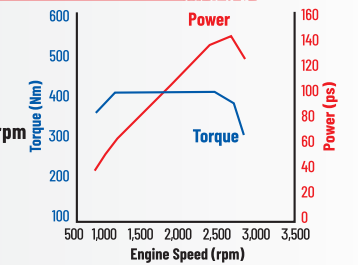


NPR PRO 4HL1-TC

Displacement: **4,778cc**
Max. Output (Gross): **135ps (99.3kW) @ 2,600rpm**
Max. Torque: **372Nm @ 1,600rpm**

135PS
MAX POWER

372Nm
FLAT TORQUE

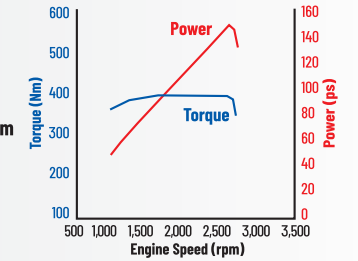


NPR 150 / NQR PRO 4HK1-TC

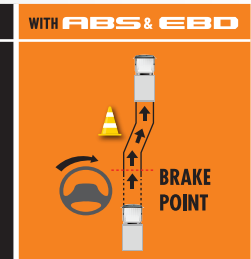
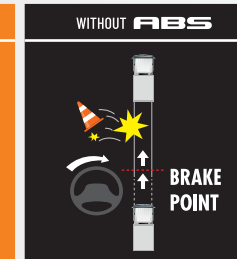
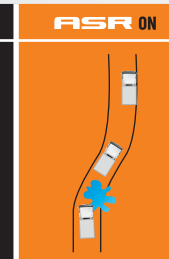
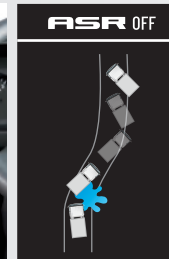
Displacement: **5,193cc**
Max. Output (Gross): **150ps (110kW) @ 2,600rpm**
Max. Torque: **404Nm @ 1,600 - 2,600rpm**

150PS
MAX POWER

404Nm
FLAT TORQUE



CLASS-LEADING SAFETY AND LONG TERM COST SAVINGS



ASR traction control helps prevent wheelspins and improves vehicle stability when driving on slippery roads.

EBD is a function that uses the ABS to distribute braking force between the front and rear wheels to compensate for changes in the load conditions or any shift of load due to acceleration/deceleration, thus preventing premature locking of the rear wheels.



*SRS airbag system and seat belt with pretensioner are activated in the event of a frontal collision, mitigating impact to the head and chest.

*Applicable for driver only.

80 and 90 ampere alternators provide high voltage for high consumption electrical applications.

Dealer's information

ISUZU
GENUINE PARTS

ISUZU
BEST VALUE PARTS