

# ISUZU

# ELF

*Smoother*



**SAFETY PLUS**

**SRS**  
AIRBAG

**ASR**  
ANTI-SLIP REGULATOR

**ABS**  
ANTI-LOCK BRAKING SYSTEM

**EBD**  
ELECTRONIC BRAKE FORCE DISTRIBUTION

**4 WHEELER** | **6 WHEELER**

GVW 4,800kg | GVW 7,500kg

**NLR**  
**130**

**NPR**  
**150**



**EURO**



**FREE SERVICE CAMPAIGN**  
**UP TO 100,000km\***  
\*Terms and Conditions apply.  
**ISUZU**

**ISUZU DOCTOR MOBILE**  
**24 HOUR ASSISTANCE**  
Reliable support with round-the-clock business operation.  
**1-800-88-8000**

## SPECIFICATIONS

		NLR 130		NPR 150	
MODEL CODE		NLR85UEEN	NLR85UHEN	NPR75UHLN	NPR75UKLN
Drive System		4 x 2			
<b>ENGINE</b>					
Model		4JJ1-TC		4HK1-TC	
Type		4-Cylinder In-line, 4-Cycle, Water-Cooled			
		DOHC, Turbo with Intercooler		OHC, Turbo with Intercooler	
Displacement	cc	2,999		5,193	
Maximum Output (Gross)	kW (PS) @ rpm	96 (130) @ 3,050		110 (150) @ 2,600	
Maximum Torque	Nm (kgfm) @ rpm	330 (33.6) @ 1,600-2,600		404 (41) @ 1,600-2,600	
Emission Level		Euro 3			
Fuel System		Commonrail Direct Injection			
<b>TRANSMISSION</b>					
Model / No. of Speed		MY-6S / Automated Manual Transmission			
Gear Ratio	1st	5.979			
	2nd	3.434			
	3rd	1.862			
	4th	1.297			
	5th	1.000			
	6th	0.759			
	Reverse	5.701			
	Final	4.556			
<b>WEIGHT &amp; CAPACITIES</b>					
Gross Vehicle Weight	kg	4,800		7,500	
Curb Weight	kg	1,980	2,030	2,555	2,560
Front	kg	1,425	1,435	1,705	1,695
Rear	kg	555	595	850	865
Fuel Tank Capacity	l	75		100	
<b>AXLE</b>					
Front	Type	Reverse Elliot, I-Beam			
Front Axle Capacity (Design)	kg	2,900		3,100	
Rear	Type	Banjo, Full Floating			
Rear Axle Capacity (Design)	kg	3,600		6,600	
<b>SUSPENSION SYSTEM</b>					
Suspension	Front	Semi Elliptical Alloy Steel Leaf Spring with Double Acting Telescopic Shock Absorber, Stabiliser Bar		Semi Elliptical Alloy Steel Leaf Spring with Double Acting Telescopic Shock Absorber	
	Rear	Semi Elliptical Alloy Steel Leaf Spring with Double Acting Telescopic Shock Absorber			
<b>TYRES &amp; WHEELS</b>					
Tyres		205 / 85R16		215 / 75R17.5	
Wheels		16 x 5.5J-85		17.5 x 6.00-127	
<b>BRAKES</b>					
Service	Type	Hydraulic system with auto adjusting front and rear drum brakes			
		Dual circuit, vacuum assistance and Anti-Lock Brake System (ABS) with Electronic Brake force Distribution (EBD)			
Parking Brake Type		Transmission Mounted, Mechanical Operated Internal Expanding			
Auxiliary		Exhaust Brake			
<b>STEERING</b>					
Steering System		Power Assist, Recirculating Ball Type			
Min. Turning Radius	m	5.4	7.1	6.3	7.0
<b>ELECTRICAL</b>					
Battery		12V x 2			
Alternator		24V-90A			
<b>OTHER SAFETY</b>					
Supplemental Restraint System (SRS)		Equipped with Pre-tensioner Seatbelt			
Anti-Slip Regulator (ASR)		Equipped with on/off function			
<b>DIMENSION</b>					
Overall Length	mm	4,730	6,025	5,985	6,635
Overall Width	mm	1,815		2,115	
Overall Height	mm	2,172		2,255	
Wheelbase	mm	2,475	3,345	3,365	3,815
Front Overhang	mm		1,110		
Rear Overhang	mm	1,145	1,570	1,510	1,710
Front Tread	mm	1,475		1,680	
Rear Tread	mm	1,395		1,650	
Cab to Axle Center	mm	2,022	2,892	2,792	3,242

**ISUZU**

ISUZU MALAYSIA SDN BHD 200401026438 (664946-H)

501D, LEVEL 5, TOWER D, UPTOWN 5, NO.5, JALAN SS21/39, DAMANSARA UPTOWN, 47400 PETALING JAYA, SELANGOR DARUL EHSAN.  
GENERAL LINE: 03-7723 9777 FAX: 03-7723 9779  
HOTLINE: 1-300-88-1133 www.isuzu.net.my

IsuzuTrucksMalaysia

ISUZU SERVICE CENTRE SDN BHD 201601034731 (1205672-X)

LOT 730, JALAN SG. RASA, SECTION 17, 40000 SHAH ALAM, SELANGOR DARUL EHSAN.  
PHONE: 03-5513 0518  
FAX: 03-5512 7550

## TESTED AND PROVEN POWERTRAIN



### NLR 130 4JJ1-TC

Displacement: **2,999cc**  
Max. Output (Gross):  
**130ps (96kW) @ 3,050rpm**  
Max. Torque:  
**330Nm @ 1,600 - 2,600rpm**

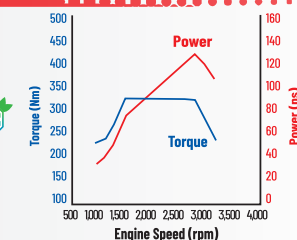
**130PS** MAX POWER  
**330Nm** FLAT TORQUE



**EURO III**



**Automated  
Manual  
Transmission**

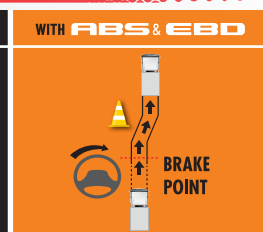
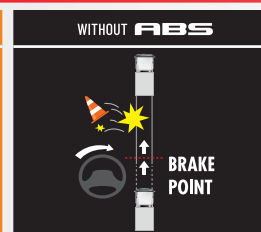
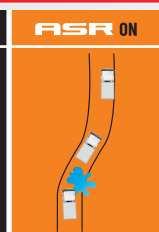
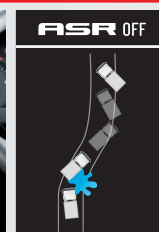


### NPR 150 4HK1-TC

Displacement: **5,193cc**  
Max. Output (Gross):  
**150ps (110kW) @ 2,600rpm**  
Max. Torque:  
**404Nm @ 1,600 - 2,600rpm**

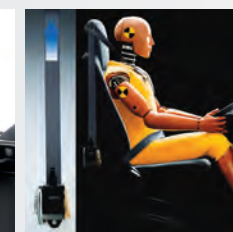
**150PS** MAX POWER  
**404Nm** FLAT TORQUE

## CLASS-LEADING SAFETY AND LONG TERM COST SAVINGS



ASR traction control helps prevent wheelspins and improves vehicle stability when driving on slippery roads.

EBD is a function that uses the ABS to distribute braking force between the front and rear wheels to compensate for changes in the load conditions or any shift of load due to acceleration/deceleration, thus preventing premature locking of the rear wheels.

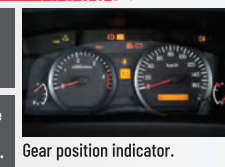
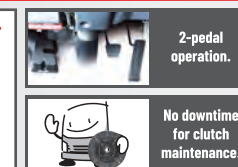
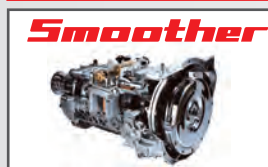


\*Applicable for NPR75UHLN / UKLN only.

\*SRS airbag system and seat belt with pretensioner are activated in the event of a frontal collision, mitigating impact to the head and chest. \*Applicable for driver only.

Bigger axle capacity (7.5 ton GVW\*).

## USEFUL FEATURES



New Automated Manual Transmission (AMT) makes driving easier and less stressful.

Dealer's information

**ISUZU**  
GENUINE PARTS

**ISUZU**  
BEST VALUE PARTS