



SPECIFICATIONS


1.9L 4X4 MT			3.0L 4X4 MT			1.9L 4X4 MT			3.0L 4X4 MT							
ENGINE						EXTERIOR										
Model		RZ4E-TC			4JJ3-TCX			Headlamps		Multi-Reflector Halogen with Follow-Me-Home Light						
Type		In-Line 4-Cylinder VGS Turbo Intercooler Diesel DOHC 16V			In-Line 4-Cylinder VGS Turbo Intercooler Diesel DOHC 16V			Daytime Running Lights (DRL)		Bulb						
Displacement (cc)		1,898			2,999			Headlamp Levelling		Manual						
Bore x Stroke (mm)		80 x 94.4			95.4 x 104.9			Fog Lamps		Equipped - Front Bulb						
Compression Ratio		16.5 : 1			16.3 : 1			Front Grille		Black & Grey						
Maximum Output (PS / rpm) [ISO NET]		150 / 3,600			190 / 3,600			Front Bumper		Black						
Maximum Torque (Nm / rpm) [ISO NET]		350 / 1,800 - 2,600			450 / 1,600 - 2,600			Wipers		With Variable Intermitent						
Fuel System		Direct Injection Electronic Commonrail			Direct Injection Electronic Commonrail			Door Outer Mirrors		Black - Power Adjust						
								Door Handles		Black						
								Tailgate Handles		Side Lock Type						
								Cargo Box Outer Hooks		Equipped						
								Guard Frame		Equipped						
								Bed Liner		Equipped						
								Rear Combination Lamps		Bulb						
								Rear Bumper		Black - Two Step Type						
TRANSMISSION						INTERIOR										
Type		6-Speed Manual with Gear Shift Indicator (GSI) & Reverse Gear Lockout				Meter Panel		Conventional Type with Illumination Control								
CHASSIS & SUSPENSION						Multi-Information Display (MID)		3.5 inch LCD Monochrome Display								
Suspension	Front	Independent Double Wishbones, Coil Springs & Stabilizers with Gas Shock Absorbers				Steering Wheel	Type Adjustment	4-Spoke Urethane Tilt & Telescopic								
	Rear	Semi-Elliptical Leaf Springs with Gas Shock Absorbers						Equipped								
Brakes	Front	Ventilated Disc				Lane Changing Mode		Equipped								
	Rear	Leading & Trailing Drums				Sun Visor		Equipped with Ticket Holder for Driver								
Terrain Command 4X4 System		Equipped				Rear View Mirror		Day & Night								
Rear Differential Lock		Equipped				Audio System	Type Speaker	1-Din AM/FM, USB & Bluetooth								
Steering System		Rack & Pinion Hydraulic Power Steering						2								
Min. Turning Radius (m)		6.25				Climate Control		Manual								
Tyres & Wheels		205R16C, 16 inch Steel				Gear Knob Type		Urethane								
Spare Tyre & Wheel		205R16C, Steel				Seats		Vinyl with 4-way Manual Adjust								
DIMENSION, WEIGHT & CAPACITIES						Power Door Lock		Equipped with Speed Sensing Auto Door Lock & Auto Unlock if Airbags are Activated								
Overall Length (mm)		5,330				Power Windows		Equipped with Auto Up/Down & Jam Protection for Driver								
Overall Width (mm)		1,810				Cabin Lamp		Equipped								
Overall Height (mm)		1,770				12V/120W Power Outlet		Equipped								
Wheelbase (mm)		3,125				Assist Handles		Fixed Type at A-Pillar								
Deck Length (mm)		2,345				Rubber Floor Tray		Equipped								
Deck Width (mm)		1,590				Rear Window Defogger		Equipped								
Deck Height (mm)		465				ACTIVE SAFETY										
Min. Ground Clearance (mm)		220				Anti-lock Brake System (ABS)		Equipped								
Water Wading Depth (mm)		800				Electronic Brake-force Distribution (EBD)		Equipped								
Kerb Weight (kg)		1,805		1,885		Brake Assist (BA)		Equipped								
Gross Weight (kg)		2,800				Electronic Stability Control (ESC)		Equipped								
Seating Capacity		2				Traction Control System (TCS)		Equipped								
Fuel Tank Capacity (L)		76				Hill Start Assist (HSA)		Equipped								
						Hill Descent Control (HDC)		Equipped								
						Brake Override System (BOS)		Equipped								
						Emergency Stop Signal (ESS)		Equipped								
						High Mount Stop Lamp		Equipped								
						Reverse Sensor		Equipped - 2 Sensors Type								
PASSIVE SAFETY						SECURITY										
SRS Airbags		2 (Driver & Front Passenger)				Vehicle Security System		Alarm System with Key-Coded Immobilizer								
Side Door Impact Beams		All Doors														
Collapsible Steering Column		Equipped														
Whiplash Protection		All Seats														
Seat Belts		3-Point ELR with Pre-Tensioner & Load Limiter														
Seat Belt Reminder		All Seats														




Over 80 Years  
Pioneering Spirit Representing  
The World




WARRANTY  
5 YEARS  
150,000 KM



B20  
DIESEL  
COMPATIBLE



ISUZU  
Roadside Assistance



ISUZU  
Insurance Pro

Authorised Dealer

INDAH UTARA AUTO SDN BHD (590910-D)

Alor Setar (HQ) : 013 - 451 5555

Sungai Petani Branch : 010 - 209 7894

Bukit Mertajam Branch : 016 - 410 0357

Isuzu Malaysia Sdn. Bhd. 200401026438 (664946-H)

Authorised Dealer

INDAH UTARA AUTO SDN BHD (590910-D)

**Alor Setar (HQ)** : 013 - 451 5555  
**Sungai Petani Branch** : 010 - 209 7894  
**Bukit Mertajam Branch** : 016 - 410 0357

Isuzu Malaysia Sdn. Bhd. 200401026438 (664946-H)  
501D, Level 5, Tower D, Uptown 5, No. 5, Jalan SS21/39,  
Damansara Uptown, 47400 Petaling Jaya, Selangor.  
Visuals and specifications shown in this brochure may differ from actual model. Isuzu Malaysia Sdn. Bhd. reserves the right to change technical specifications and features without prior notice. All optional accessories are subject to additional charges.



THE NEW ISUZU  
D-MAX

Expertise | Excellence | Passion



# WORK HARD, DRIVE EASY

Tough, reliable, and always ready for a challenge, The New Isuzu D-Max Single Cab is built to work hard and get the job done. Designed to haul heavy loads, conquer rugged terrain, and endure tough job sites, it's more than your workhorse pickup, but the partner you can rely on.

With a heavy-duty frame, a durable rear tray, and a design focused on functionality and strength, this pickup is made for the long haul. Whether navigating muddy roads, hauling materials, or tackling extreme conditions, The New Isuzu D-Max Single Cab is crafted to work hard and deliver, day after day.





# BUILT TO ENDURE

Tough jobs require tough pickups, and The New Isuzu D-Max Single Cab rises to the challenge. With a solid Blue Power engine and a design that handles any workday, this pickup makes light work of the hardest tasks.

Not just a workhorse; The New Isuzu D-Max Single Cab showcased its remarkable performance in the **Borneo Safari**, Southeast Asia's largest annual off-road motorsport event, proving its powerful capabilities in the wildest conditions. Adding to its legacy, the **Dura-Miles Fuel Efficiency Run 2024** saw the Blue Power engine achieve over 2,004km on a single tank, securing its spot in the Malaysia Book of Records as the perfect combination of strength and efficiency.



Watch the power unfold here



See it in action here

**3.0 TD**  
BLUE POWER

**1.9 TD**  
BLUE POWER



## 6-Speed Manual Transmission with Gear Shift Indicator (GSI)

Adapts lock-up positions to driving style, load, and cruising speed.

## TERRAIN COMMAND

Shift between 2WD, 4WD-High, and 4WD-Low modes to easily conquer any road, wet or rugged.

## 4X4

**Rear Differential Lock**  
Provides the traction needed to overcome off-road obstacles.

## 800mm Water Wading Depth

Allows you to navigate water crossings with confidence.

## Under-Body Protection

Traverse any terrain confidently with steel under-body protection.

## High Ground Clearance plus Approach & Departure Angle

Features 220mm of ground clearance with a 29° approach angle and 22.5° departure angle.



# TOUGH SAFETY FOR TOUGH WORK

With a tough chassis and advanced safety features, The New Isuzu D-Max Single Cab is built to protect you on every job. Whether you're navigating rough off-road trails or driving through tough work environments, the pickup's safety systems are engineered to provide peace of mind. With advanced safety systems like ALLSIGHT, The New Isuzu D-Max Single Cab ensures maximum protection, no matter how challenging the job.



## 01 Anti-lock Brake System (ABS)

Ensures the vehicle can still be manoeuvred in emergency situations.

## 02 Electronic Brake-force Distribution (EBD)

Allows control of braking force between front and rear wheels, depending on vehicle load.

Embark on every task with confidence. The New Isuzu D-Max Single Cab comes equipped with cutting-edge safety features to take care of you on the road.

## 03 Brake Assist (BA)

Helps to apply full braking force in emergency situations.

## 04 Electronic Stability Control (ESC)

Helps you stay in control of the vehicle.

## 05 Traction Control System (TCS)

Allows greater control over the road or terrain.

## 06 Hill Descent Control (HDC)

Automatically controls the brakes and maintains vehicle speed when descending steep slopes.

## Hill Start Assist (HSA)

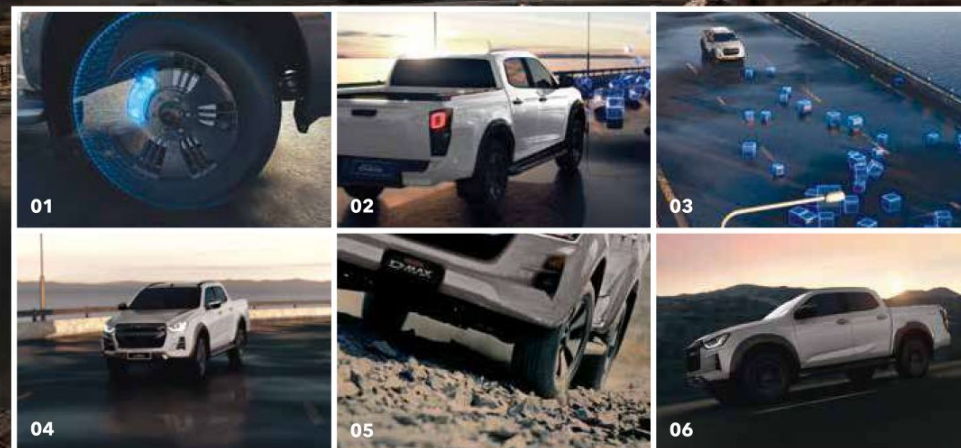
Automatically prevents vehicle roll-back when starting on steep gradients.

## Emergency Stop Signal (ESS)

In emergency situations, warning lights are activated to indicate that the vehicle is braking rapidly.

## Brake Override System (BOS)

Decreases engine power in case brake and accelerator pedals are pressed at the same time.



ISUZU  
DYNAMIC  
DRIVE PLATFORM



Explore all the safety  
features here