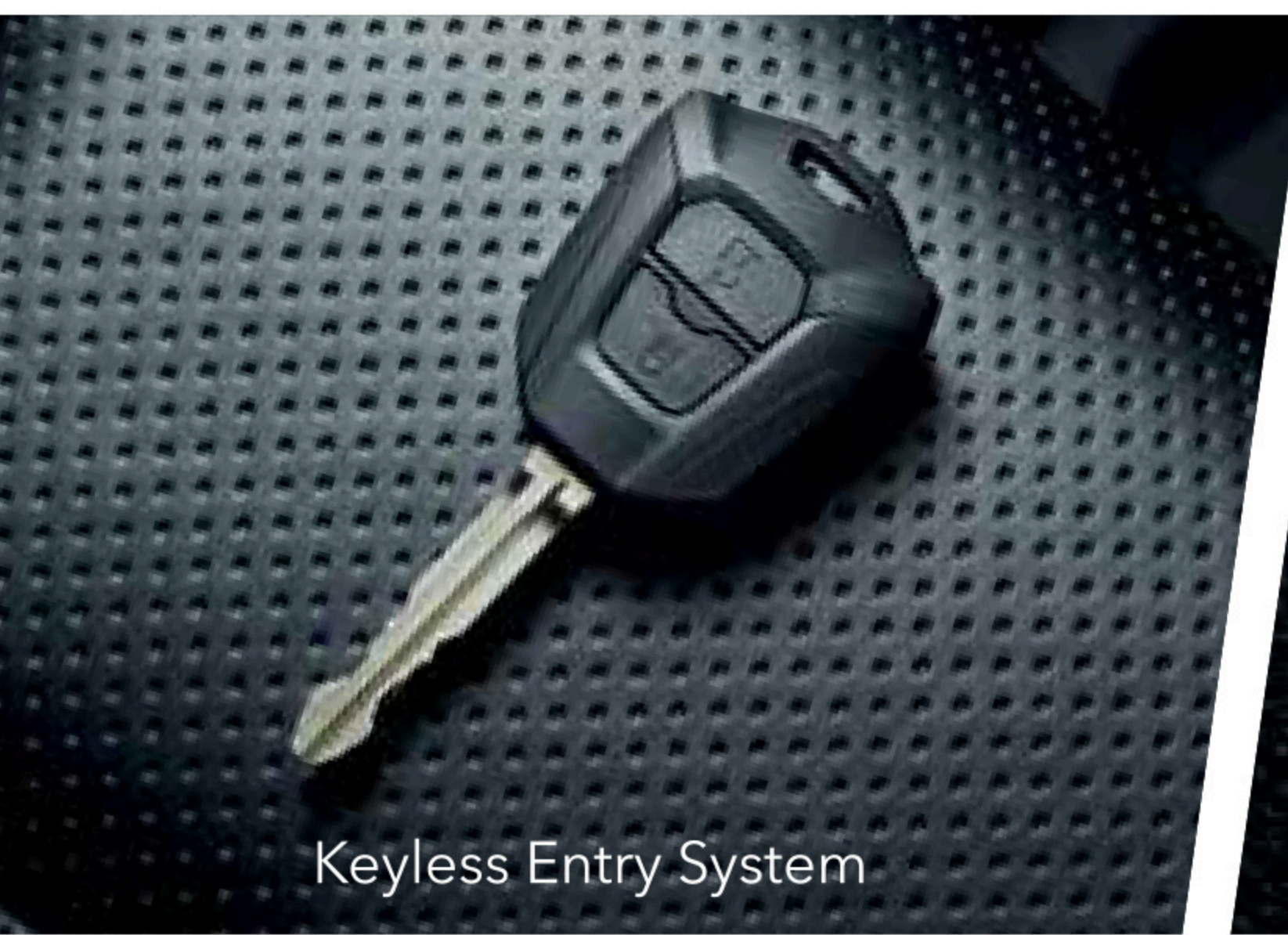


THE NEW **ISUZU**
D-MAX



UNLEASH
DOMINANCE



Keyless Entry System



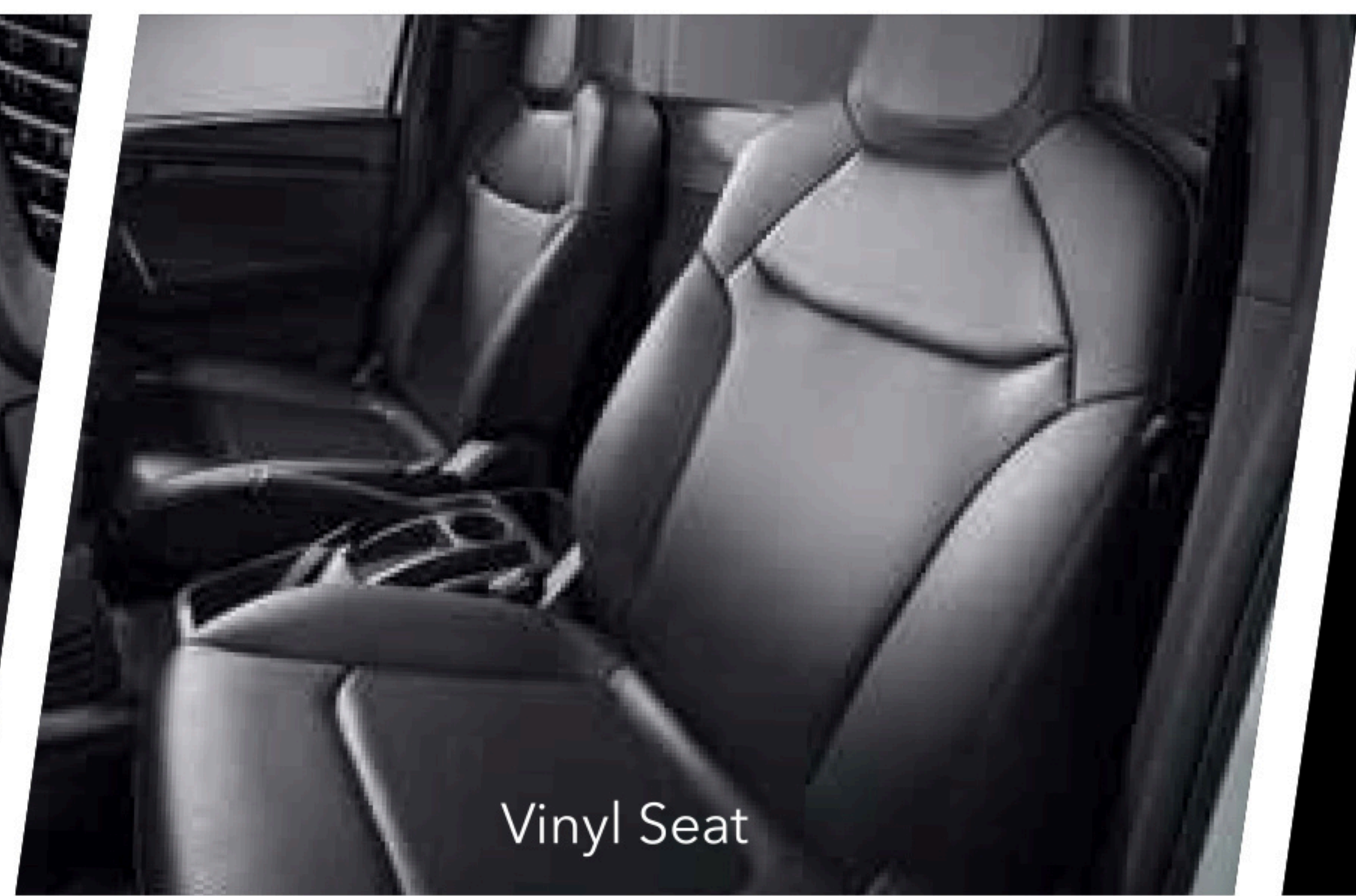
12V Power Outlet



1.5L Bottle Storage



Multi Storage Compartment



Vinyl Seat



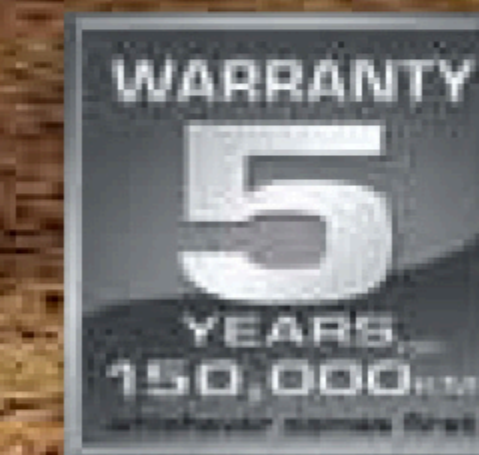
Power Window and Power Door Lock



TACKLE ALL BUSINESS ENDEAVOURS

The redesigned exterior of The New Isuzu D-Max Single Cab elevates your business image to new heights. This pick-up comes with a bold new engine hood, front bumper and radiator grille design which makes your business stand out wherever it takes you.

On top of that, it now comes with new features such as Variable Intermittent Wiper System, Tilt & Telescopic Adjustable Steering Wheel, Manual A/C with heater function, Alarm System and a New Meter Panel Design.



Outer Hook



New Reverse Sensor



Big Cargo Space



New Headlamps and New Fog Lamps



Guard Frame

Power Adjust Side Mirrors

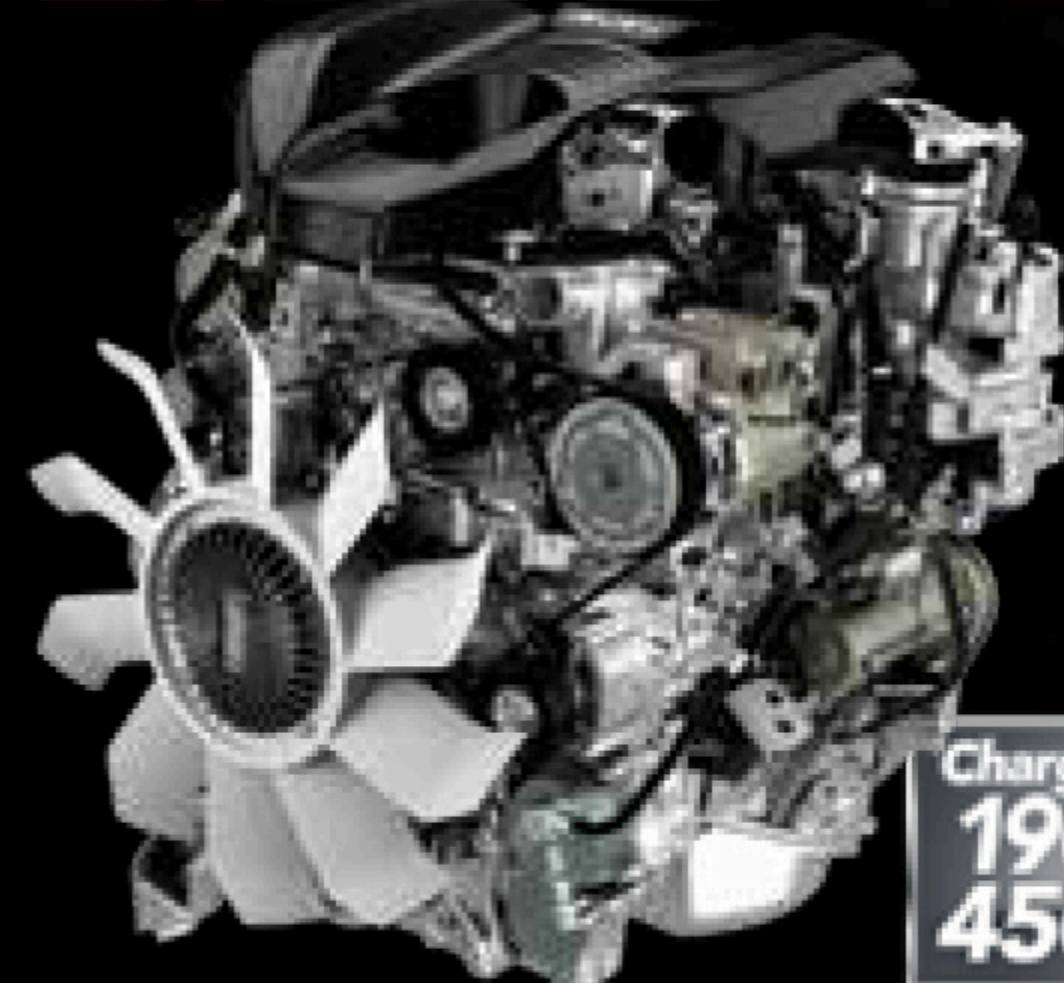
Tailgate Lock

Rear Bumper

EXCEPTIONAL POWER IN EACH TASK



3.0 TD



Charge ahead
190PS
450Nm

1.9 TD



Charge ahead
150PS
350Nm

You're getting incredible performance and impressive fuel economy with The New Isuzu D-Max Single Cab - all run by Isuzu's signature Blue Power engine.

BLUE POWER



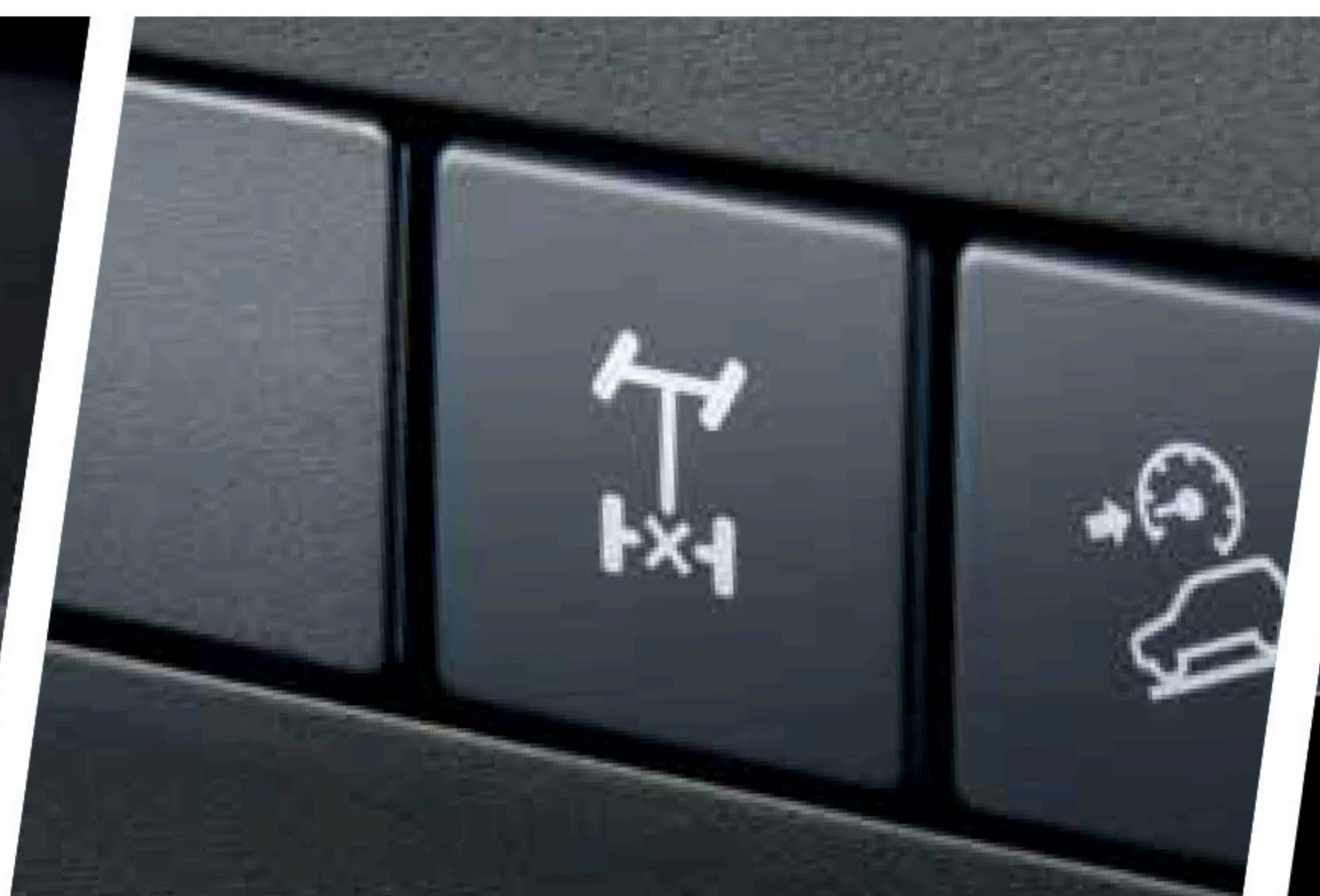
6-Speed Manual Transmission with Gear Shift Indicator (GSI)

Seamlessly shift through gears, delivering optimal control and maximising fuel efficiency.



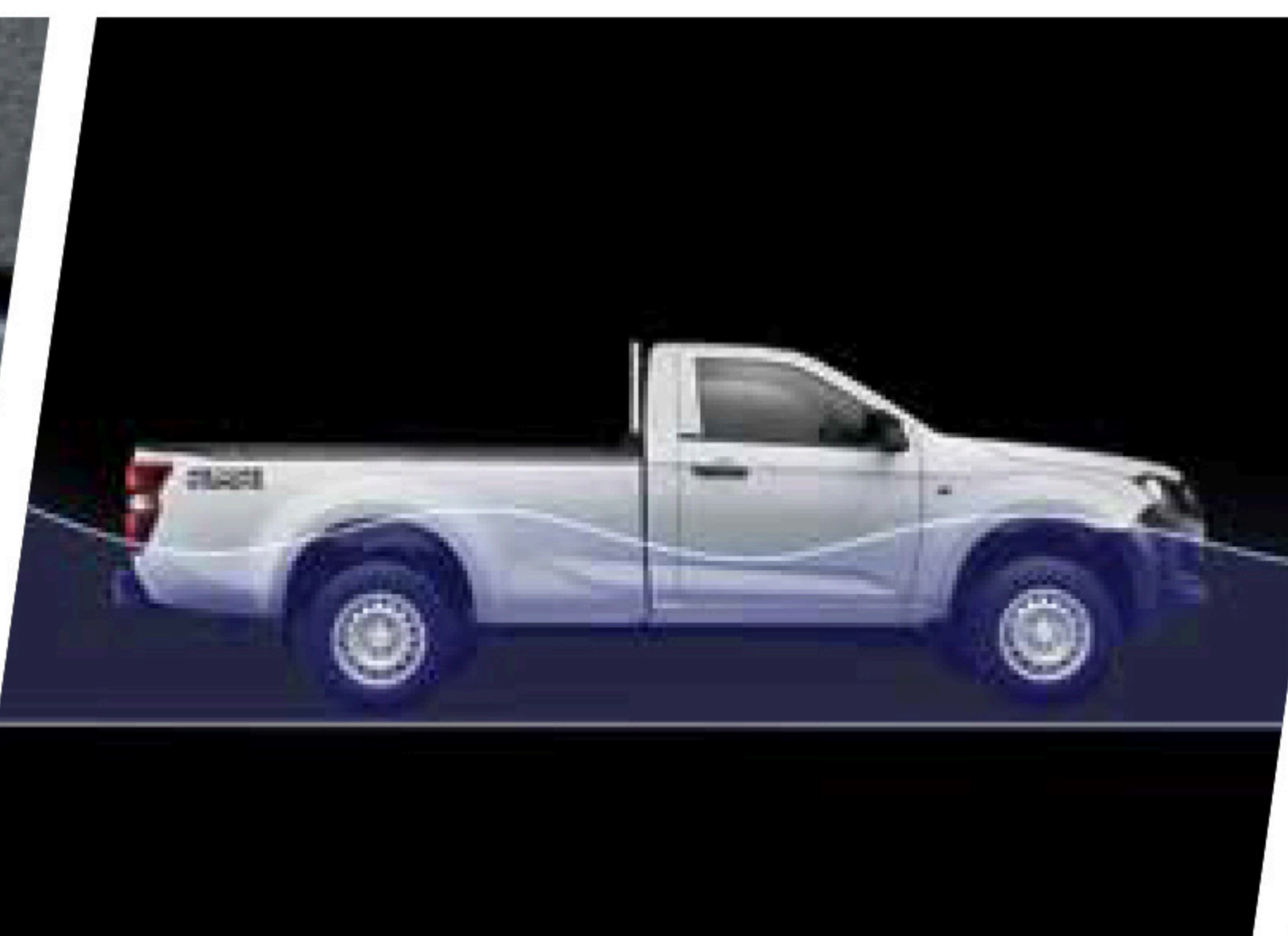
TERRAIN COMMAND

Venture into extreme terrains with The New Isuzu D-Max Single Cab, featuring Terrain Command that takes less than a second to switch between 2WD, 4WD-high, and 4WD-low modes.



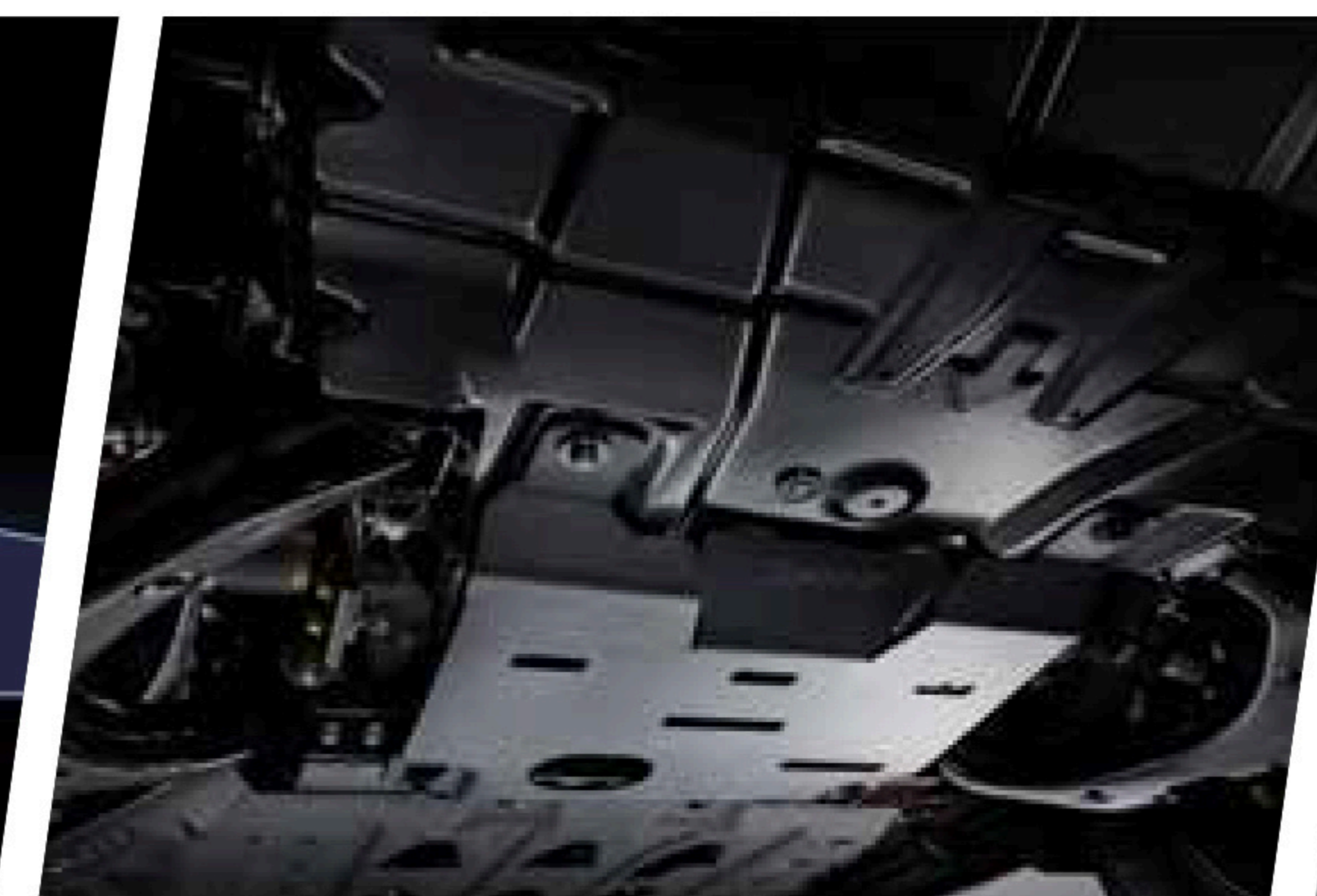
4x4 DIFF LOCK

Rear Differential Lock
The differential lock makes sure you have the traction you need to get out of difficult obstacles when travelling off-road.



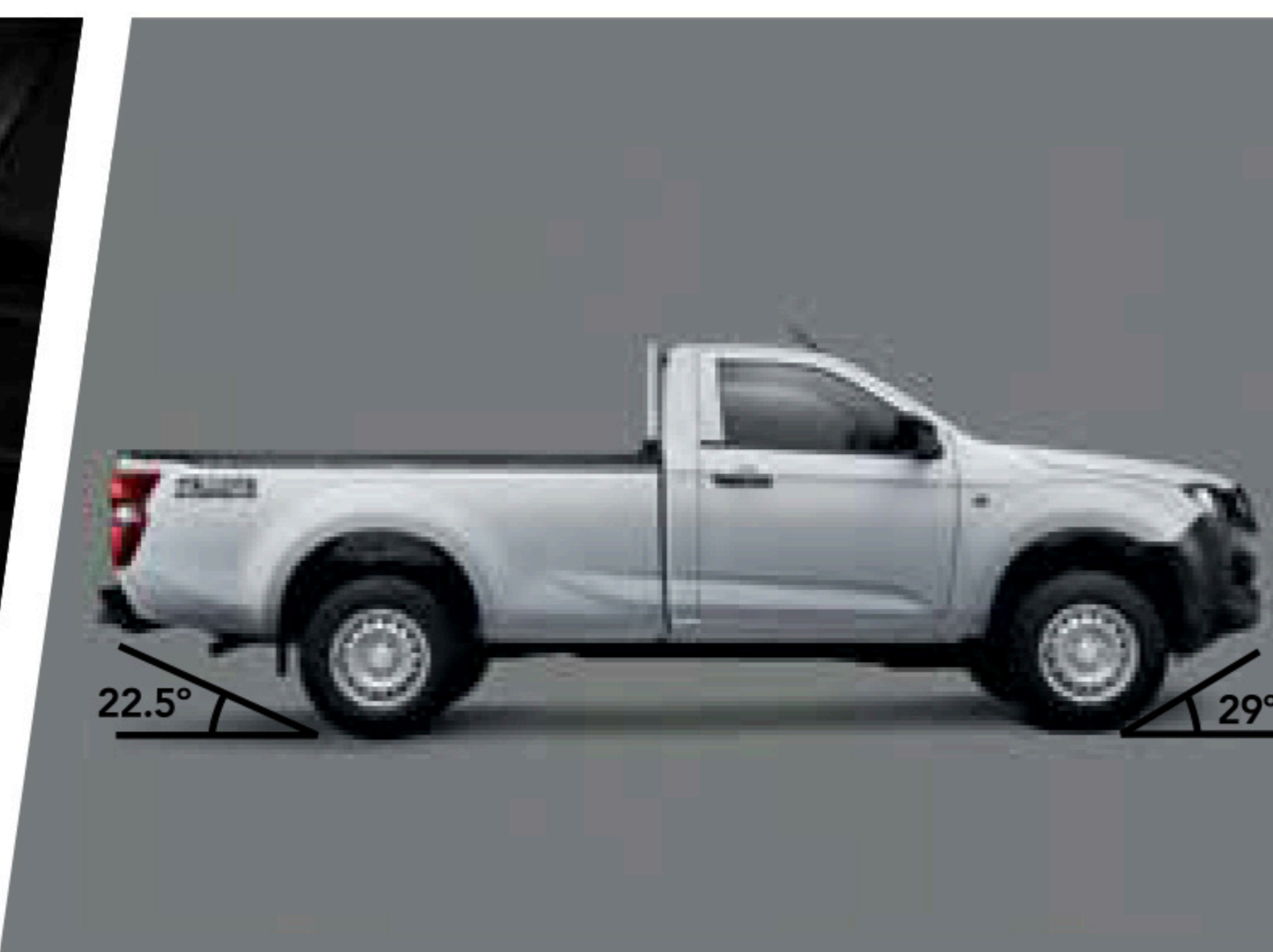
800mm Water Wading Depth

Wading depth of 800mm allows you to navigate water crossings with confidence.



Under-Body Protection

Travel on various terrains without worries with the essential parts of your New Isuzu D-Max Single Cab protected by steel under-body guard.



High Ground Clearance plus Approach and Departure Angle

The New Isuzu D-Max Single Cab features 220mm Ground Clearance plus an approach angle of 29° and departure angle of 22.5°.

KEEPS YOUR BUSINESS MOVING FORWARD



Our pick-up trucks are engineered with the Isuzu "Truck DNA", producing pick-ups that are well-known for durability, reliability and fuel efficiency - all because we want to deliver only the best for you, here at Isuzu.



ISUZU DYNAMIC DRIVE PLATFORM



ALL-SIGHT Isuzu Comprehensive Safety Technology

You get to embark on every task with confidence. The New Isuzu D-Max Single Cab comes equipped with cutting-edge safety features, all catered to take care of you on the road.

01 Anti-lock Brake System (ABS)

In emergency situations, the system ensures the vehicle can still be manoeuvred.

02 Electronic Brake-force Distribution (EBD)

Allows the control of braking force between the front and rear wheels depending on vehicle load.

03 Brake Assist (BA)

In emergency situations, the system helps to apply full braking force.

04 Electronic Stability Control (ESC)

Helps you stay in control of the vehicle.

05 Traction Control System (TCS)

Allows for greater control over the road or terrain.

06 Hill Descent Control (HDC)

Automatically controls the brakes and maintains vehicle speed while descending steep slopes.

Hill Start Assist (HSA)

Prevents vehicle roll-back automatically when starting on steep gradients.

Emergency Stop Signal (ESS)

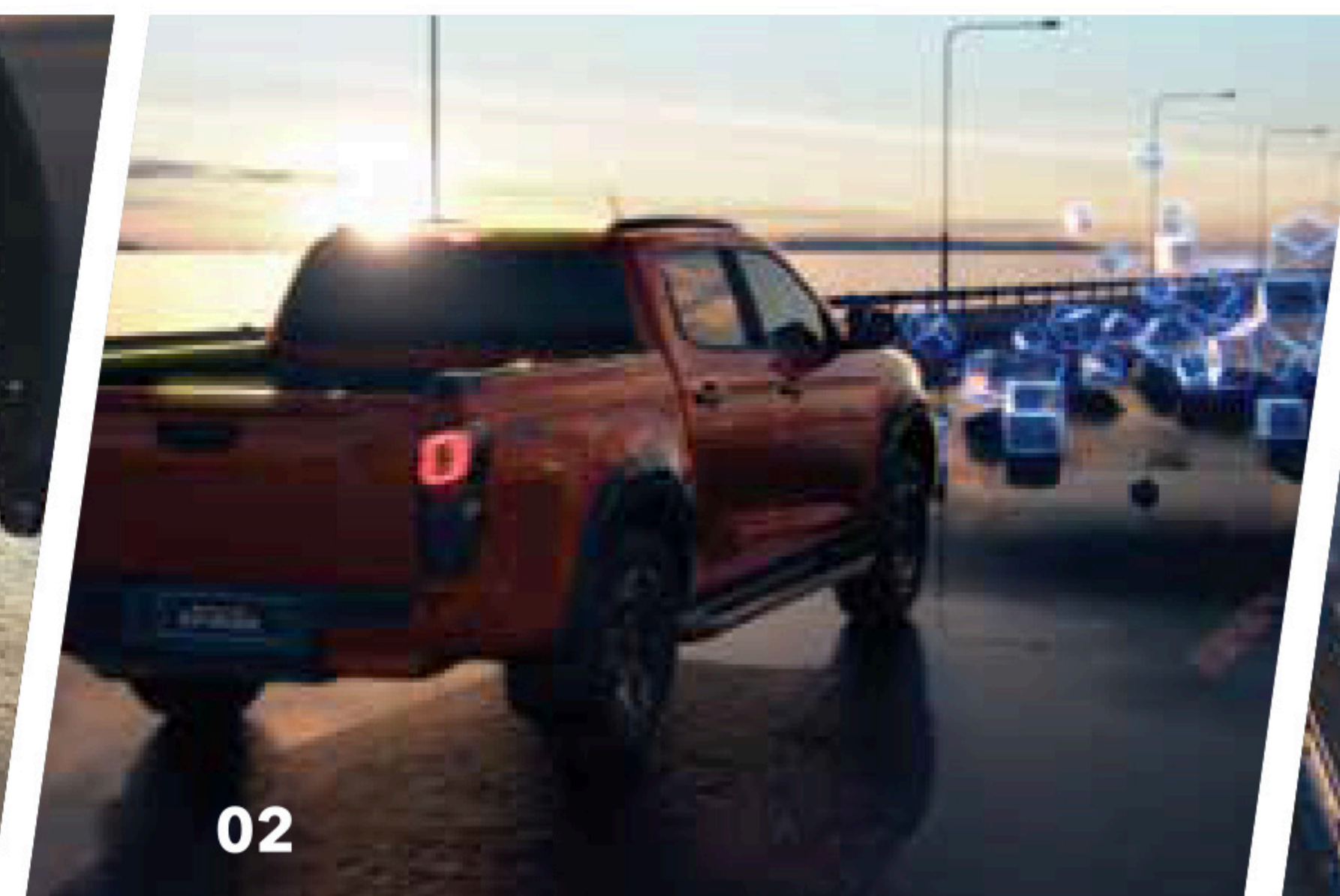
In emergency situations, warning lights are activated to indicate that the vehicle is braking rapidly.

Brake Override System (BOS)

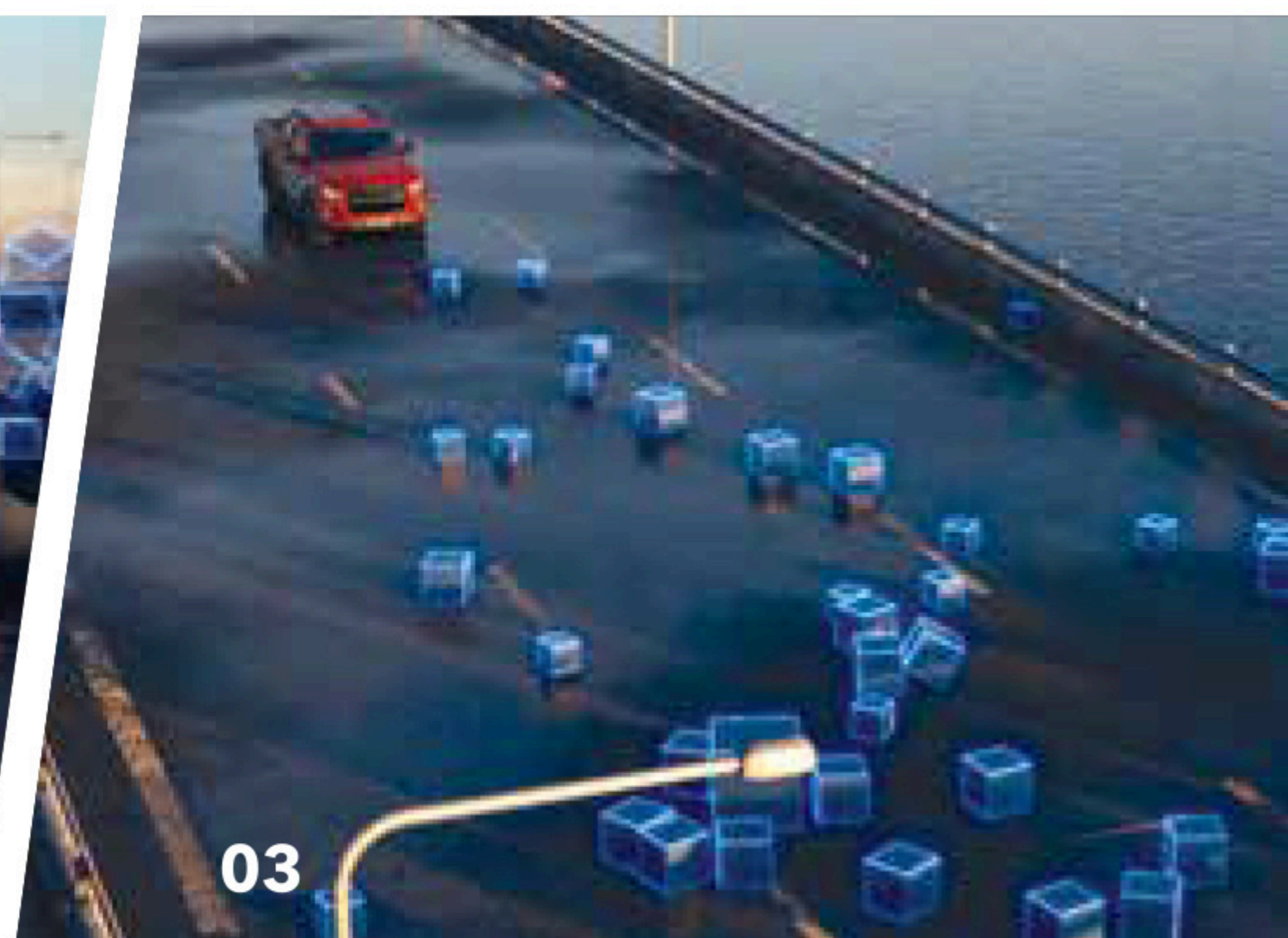
Reduces engine power if the accelerator and brake pedal are pressed at the same time.



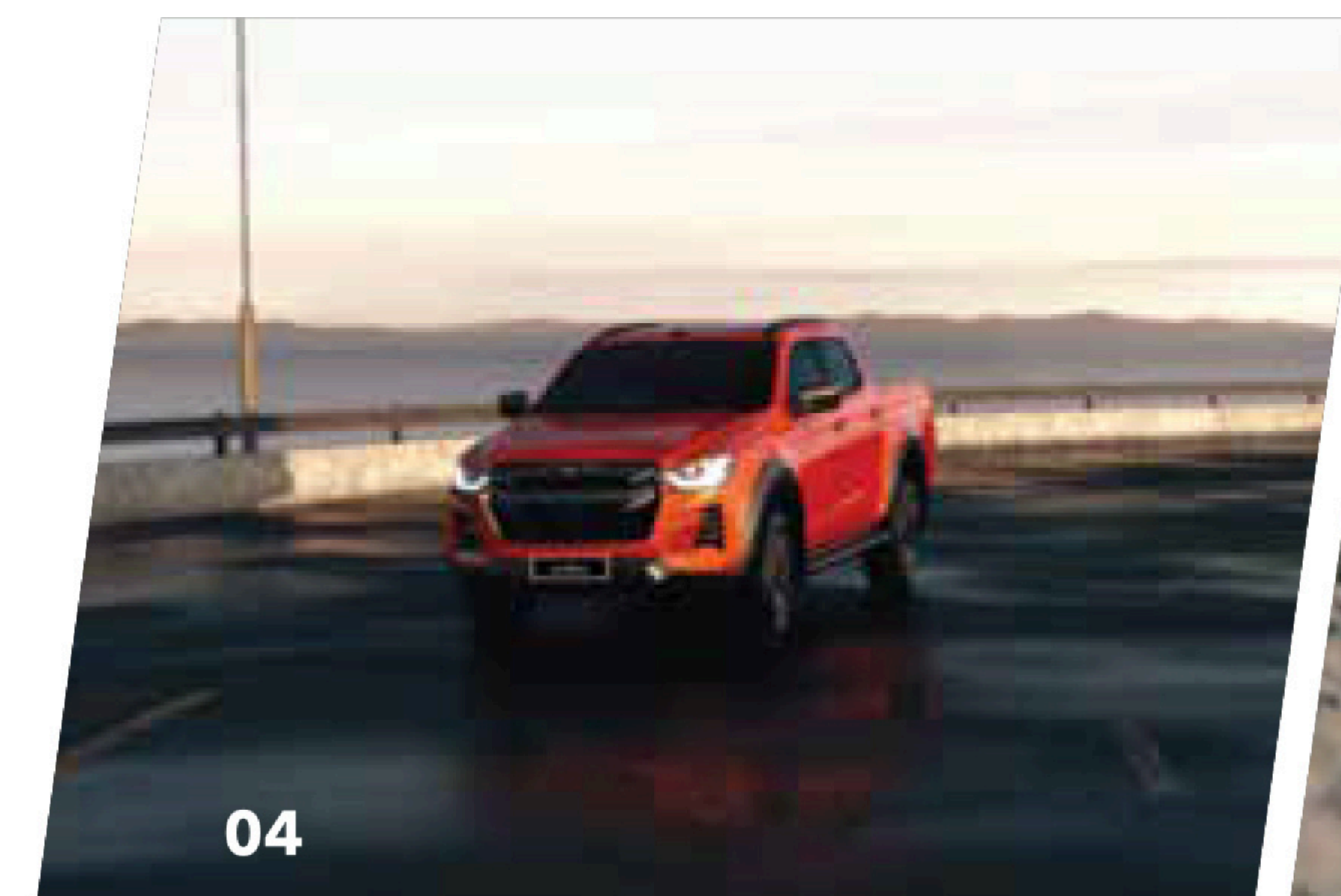
01



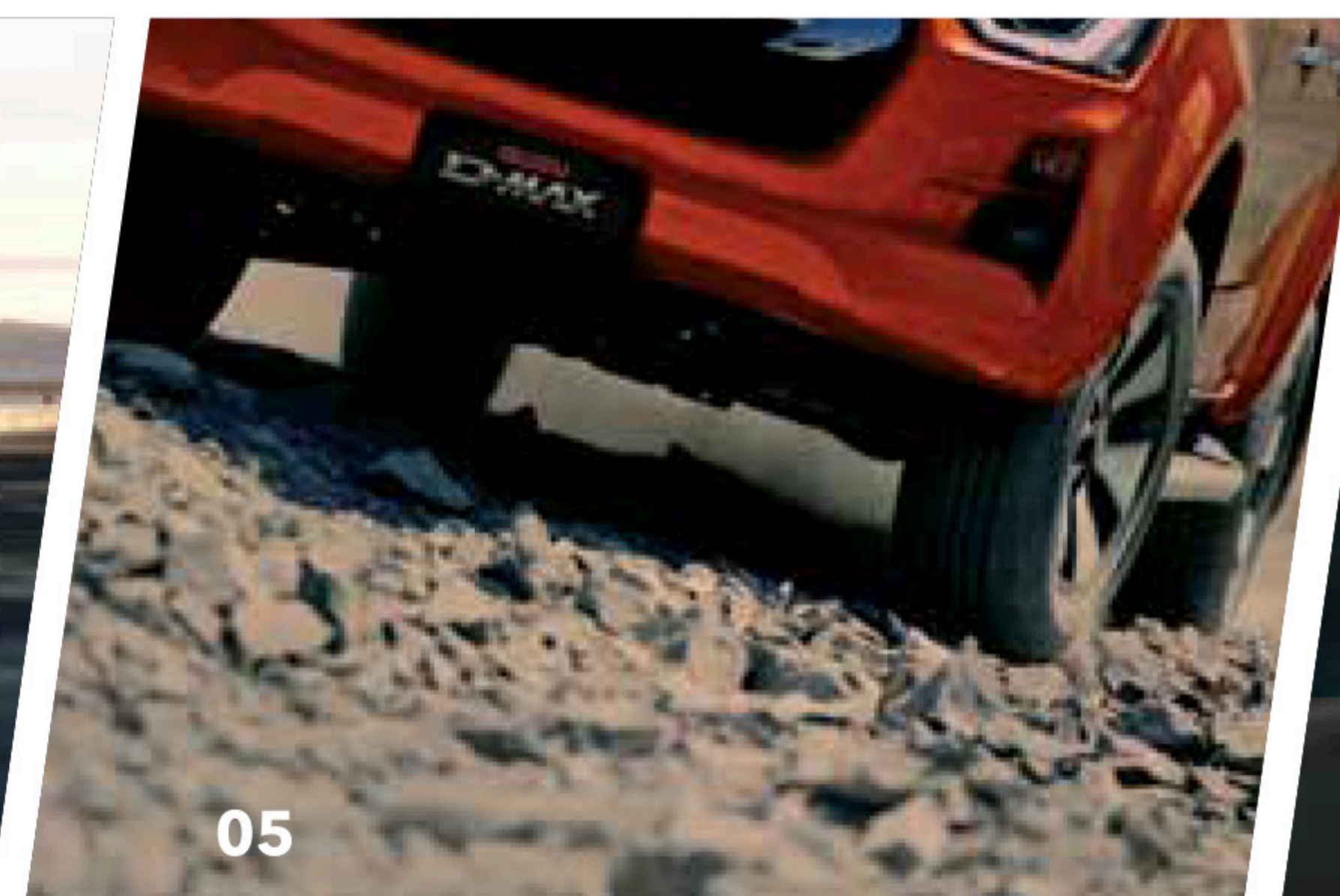
02



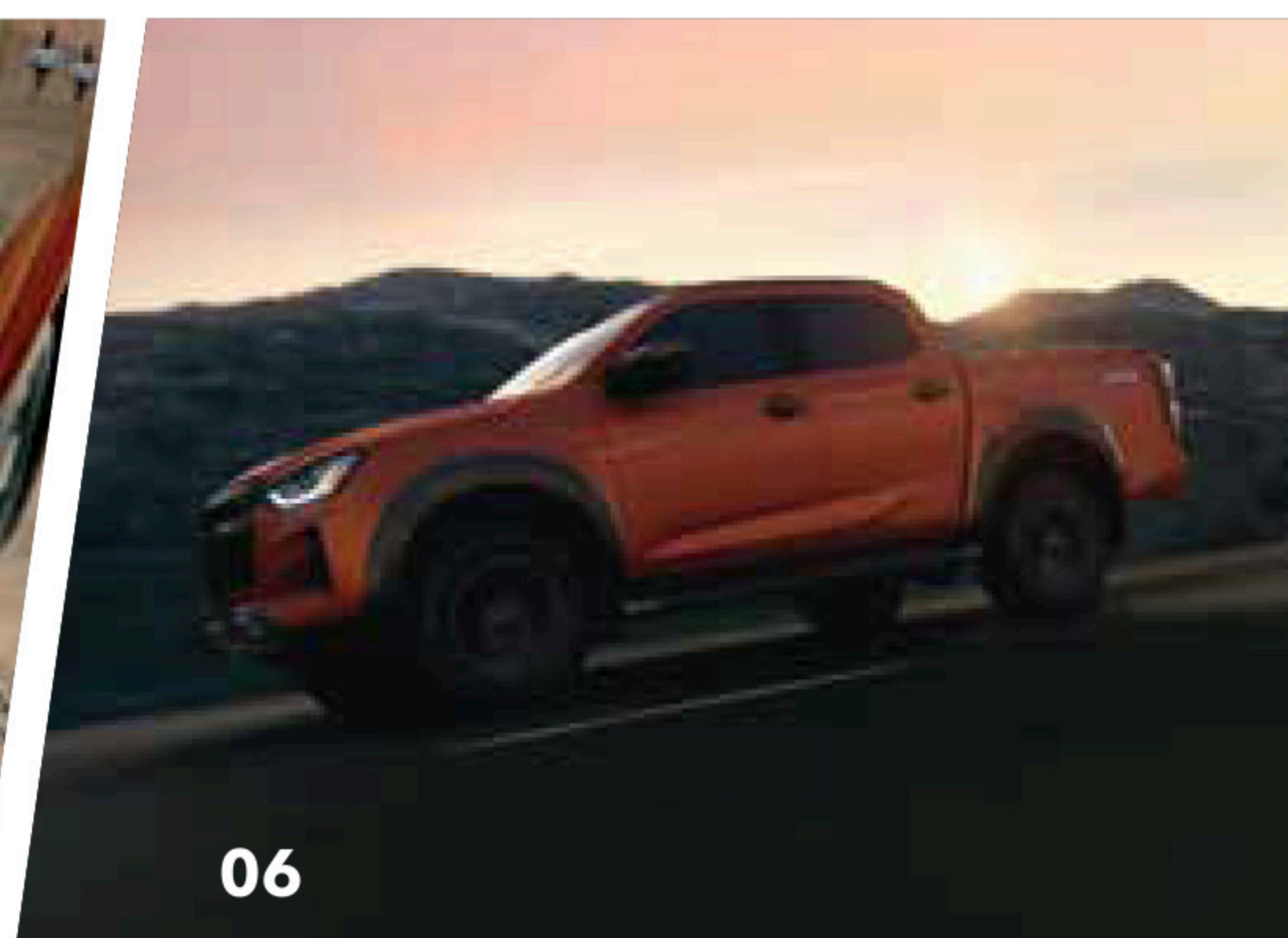
03



04



05



06

SPECIFICATIONS

1.9L 4X4 MT

3.0L 4X4 MT

1.9L 4X4 MT

3.0L 4X4 MT

| ENGINE | | |
|-------------------------------------|--|--|
| Model | RZ4E-TC | 4JJ3-TCX |
| Type | In-Line 4-Cylinder VGS Turbo Intercooler Diesel DOHC 16V | In-Line 4-Cylinder VGS Turbo Intercooler Diesel DOHC 16V |
| Displacement (cc) | 1,898 | 2,999 |
| Bore x Stroke (mm) | 80 x 94.4 | 95.4 x 104.9 |
| Compression Ratio | 16.5 : 1 | 16.3 : 1 |
| Maximum Output (PS / rpm) [ISO NET] | 150 / 3,600 | 190 / 3,600 |
| Maximum Torque (Nm / rpm) [ISO NET] | 350 / 1,800 - 2,600 | 450 / 1,600 - 2,600 |
| Fuel System | Direct Injection Electronic Commonrail | Direct Injection Electronic Commonrail |

| TRANSMISSION | |
|--------------|---|
| Type | 6-Speed Manual with Gear Shift Indicator (GSI) & Reverse Gear Lockout |

| CHASSIS & SUSPENSION | | | |
|----------------------------|--|---|--------------------------|
| Suspension | Front | Independent Double Wishbones, Coil Springs & Stabilizers with Gas Shock Absorbers | |
| | Rear | | |
| Brakes | Front | | Ventilated Disc |
| | Rear | | Leading & Trailing Drums |
| Terrain Command 4X4 System | Equipped | | |
| Rear Differential Lock | Equipped | | |
| Steering System | Rack & Pinion Hydraulic Power Steering | | |
| Min. Turning Radius (m) | 6.25 | | |
| Tyres & Wheels | 205R16C, 16 inch Steel | | |
| Spare Tyre & Wheel | 205R16C, Steel | | |

| DIMENSION, WEIGHT & CAPACITIES | | |
|--------------------------------|-------|-------|
| Overall Length (mm) | 5,330 | |
| Overall Width (mm) | 1,810 | |
| Overall Height (mm) | 1,770 | |
| Wheelbase (mm) | 3,125 | |
| Deck Length (mm) | 2,345 | |
| Deck Width (mm) | 1,590 | |
| Deck Height (mm) | 465 | |
| Min. Ground Clearance (mm) | 220 | |
| Water Wading Depth (mm) | 800 | |
| Kerb Weight (kg) | 1,805 | 1,885 |
| Gross Weight (kg) | 2,800 | |
| Seating Capacity | 2 | |
| Fuel Tank Capacity (L) | 76 | |

| EXTERIOR | |
|------------------------------|---|
| Headlamps | Multi-Reflector Halogen with Follow-Me-Home Light |
| Daytime Running Lights (DRL) | Bulb |
| Headlamp Levelling | Manual |
| Fog Lamps | Equipped - Front Bulb |
| Front Grille | Black & Grey |
| Front Bumper | Black |
| Wipers | With Variable Intermittent |
| Door Outer Mirrors | Black - Power Adjust |
| Door Handles | Black |
| Tailgate Handles | Side Lock Type |
| Cargo Box Outer Hooks | Equipped |
| Guard Frame | Equipped |
| Bed Liner | Equipped |
| Rear Combination Lamps | Bulb |
| Rear Bumper | Black - Two Step Type |

| INTERIOR | | |
|---------------------------------|---|------------------------------|
| Meter Panel | Conventional Type with Illumination Control | |
| Multi Information Display (MID) | 3.5 inch LCD Monochrome Display | |
| Steering Wheel | Type | 4-Spoke Urethane |
| | Adjustment | Tilt & Telescopic |
| Lane Changing Mode | Equipped | |
| Sun Visor | Equipped with Ticket Holder for Driver | |
| Rear View Mirror | Day & Night | |
| Audio System | Type | 1-Din AM/FM, USB & Bluetooth |
| | Speaker | 2 |
| Climate Control | Manual | |
| Gear Knob Type | Urethane | |
| Seats | Vinyl with 4-way Manual Adjust | |
| Power Door Lock | Equipped with Speed Sensing Auto Door Lock & Auto Unlock if Airbags are Activated | |
| Power Windows | Equipped with Auto Up/Down & Jam Protection for Driver | |
| Cabin Lamp | Equipped | |
| 12V/120W Power Outlet | Equipped | |
| Assist Handles | Fixed Type at A-Pillar | |
| Rubber Floor Tray | Equipped | |

| ACTIVE SAFETY | |
|---|---------------------------|
| Anti-lock Brake System (ABS) | Equipped |
| Electronic Brake-force Distribution (EBD) | Equipped |
| Brake Assist (BA) | Equipped |
| Electronic Stability Control (ESC) | Equipped |
| Traction Control System (TCS) | Equipped |
| Hill Start Assist (HSA) | Equipped |
| Hill Descent Control (HDC) | Equipped |
| Brake Override System (BOS) | Equipped |
| Emergency Stop Signal (ESS) | Equipped |
| High Mount Stop Lamp | Equipped |
| Reverse Sensor | Equipped - 2 Sensors Type |

| PASSIVE SAFETY | |
|-----------------------------|---|
| SRS Airbags | 2 (Driver & Front Passenger) |
| Side Door Impact Beams | All Doors |
| Collapsible Steering Column | Equipped |
| Whiplash Protection | All Seats |
| Seat Belts | 3-Point ELR with Pre-Tensioner & Load Limiter |
| Seat Belt Reminder | All Seats |

| SECURITY | |
|-------------------------|---|
| Vehicle Security System | Alarm System with Key-Coded Immobilizer |



Authorised Dealer

INDAH UTARA AUTO SDN BHD (590910-D)

Alor Setar (HQ) : 013 - 451 5555
Sungai Petani Branch : 010 - 209 7894
Bukit Mertajam Branch : 016 - 410 0357

Isuzu Malaysia Sdn. Bhd. 200401026438 (664946-H)
 501D, Level 5, Tower D, Uptown 5, No. 5, Jalan SS21/39,
 Damansara Uptown, 47400 Petaling Jaya, Selangor.

Visuals and specifications shown in this brochure may differ from actual model. Isuzu Malaysia Sdn. Bhd. reserves the right to change technical specifications and features without prior notice. All optional accessories are subject to additional charges.

THE NEW ISUZU D-MAX



UNLEASH **DOMINANCE**

PRICE LIST FOR ISUZU D-MAX

PENINSULAR MALAYSIA

| | | |
|-----------------------------|--------------------------------------|------------------------------------|
| Model Name | : ISUZU D-MAX 1.9L 4X4 MT SINGLE CAB | ISUZU D-MAX 3.0L 4X4 MT SINGLE CAB |
| Model Code | : TFS87JSR-RBPH14 | TFS40JSR-RBPH14 |
| Body Type | : Single Cabin Pickup | Single Cabin Pickup |
| Engine Capacity | : 1,898cc | 2,999cc |
| Drive System & Transmission | : 4x4 Manual | 4x4 Manual |

| | Individual Private (RM) | Company Private (RM) | Company Commercial (RM) | Individual Private (RM) | Company Private (RM) | Company Commercial (RM) |
|--|-------------------------|----------------------|-------------------------|-------------------------|----------------------|-------------------------|
| Recommended Selling Price | 97,650.00 | 97,650.00 | 97,650.00 | 103,350.00 | 103,350.00 | 103,350.00 |
| Handling Fee | 300.00 | 300.00 | 300.00 | 300.00 | 300.00 | 300.00 |
| Number Plate | 50.00 | 50.00 | 50.00 | 50.00 | 50.00 | 50.00 |
| Signwriting | - | - | 75.00 | - | - | 75.00 |
| Inspection Fee | 200.00 | 200.00 | 270.00 | 200.00 | 200.00 | 270.00 |
| Net Selling Price | 98,200.00 | 98,200.00 | 98,345.00 | 103,900.00 | 103,900.00 | 104,045.00 |
| Road Tax (1 Year) | 399.20 | 399.20 | 597.00 | 1,638.40 | 1,638.40 | 597.00 |
| Registration Fee | 300.00 | 500.00 | 60.00 | 300.00 | 500.00 | 60.00 |
| HP Ownership Claim | 50.00 | 50.00 | 50.00 | 50.00 | 50.00 | 50.00 |
| Recommended On-the-road Price Without Insurance | 98,949.20 | 99,149.20 | 99,052.00 | 105,888.40 | 106,088.40 | 104,752.00 |
| Sum Insured | 98,000.00 | 98,000.00 | 98,000.00 | 103,000.00 | 103,000.00 | 103,000.00 |

MAIN SPECIFICATION

| | | |
|------------------|------------------------------------|--|
| Exterior | Headlamps | Multi-Reflector Halogen with Follow-Me-Home Light and Daytime Running Light (Bulb) |
| | Headlamp Levelling | Manual |
| | Door Outer Mirrors | Black - Power Adjust |
| | Rear Combination Lamps | Bulb |
| | Tyres & Wheels | 205R16C, 16 inch Steel |
| | Bed Liner | Equipped |
| | Rear Bumper | Black - Two Step Type |
| Interior | Meter Panel | Conventional Type with Illumination Control |
| | Multi Information Display (MID) | 3.5 inch LCD Monochrome Display |
| | Steering Wheel | 4-Spoke Urethane |
| | Lane Changing Mode | Equipped |
| | Audio System | 1-Din AM/FM, USB & Bluetooth with 2 Speakers |
| | Climate Control | Manual |
| | Seats | Vinyl with 4-way Manual Adjust |
| | Power Door Lock | Equipped with Speed Sensing Auto Door Lock & Auto Unlock if Airbag Activated |
| | Power Windows | Equipped with Auto Up/Down & Jam Protection for Driver |
| | 12V/ 120W Power Outlet | Equipped |
| Rear View Mirror | Day & Night | |
| Safety | SRS Airbags | 2 (Driver & Front Passenger) |
| | ABS, EBD with BA | Equipped |
| | Electronic Stability Control (ESC) | Equipped |
| | Traction Control System (TCS) | Equipped |
| | Hill Start Assist (HSA) | Equipped |
| | Hill Descent Control (HDC) | Equipped |
| | Brake Override System (BOS) | Equipped |
| | Emergency Stop Signal (ESS) | Equipped |
| | Seat Belt Reminder | All Seats |
| | Reverse Sensor | Equipped - 2 Sensors Type |
| | Vehicle Security System | Alarm System with Key-Coded Immobilizer |
| | Rear Differential Lock | Equipped |

COLOUR VARIANTS



Splash White

FOR FURTHER DETAILS, PLEASE CONTACT:

INDAH UTARA AUTO SDN BHD (590910-D)

Alor Setar (HQ) : 013 - 451 5555
 Sungai Petani Branch : 010 - 209 7894
 Bukit Mertajam Branch : 016 - 410 0357

NOTE:

- 1) All prices are quoted in Ringgit Malaysia.
- 2) Prices and specification are subject to change without prior notice.
- 3) For detailed specification, please refer to the leaflets and brochures.

